



Opportunities ~ 2023

The Bedford County Chamber Foundation offers many opportunities for the benefit of students, adults and the community...

Education * Workforce Development * Career Exploration
 Soft Skill Development * Networking * Marketing * Exposure
 Entrepreneur Education * Event Sponsorships * Exhibitor Prospects
 Community Service and Much More...*Something for Everyone*

For more information, contact the Chamber Office: (814) 623-2233

Kellie Goodman Shaffer, President CEO—kellie@bedfordcountychamber.org

Sarah Ferrari, Program & Events/YLBC—sarah@bedfordcountychamber.org

Gwen Querry, Workforce & Education Programs/BASICS—gwen@bedfordcountychamber.org

Deanna Weaverling, Membership & Marketing/LBC—deanna@bedfordcountychamber.org

Bob Octavio, Bookkeeping—bob@bedfordcountychamber.org



BedfordCountyChamber.com/Foundation



2023 CHAMBER/FOUNDATION CALENDAR OF EVENTS

January

- TBD** Regional Workforce Inclusion Summit, Altoona
19 GIYB Legislative Reception, Bedford Elks C.C.
23 Membership Luncheon, Bedford Elks C.C.

February

- 3** Prayer Breakfast - Homewood at Spring House
18 Grown-Up Prom - Bedford Elks Country Club
22 BASICS Steps to Success* - Omni Bedford Springs Resort

March

- 3** Hall of Fame Awards Luncheon - Omni Bedford Springs
10-11 Indoor Golf Tournament - Down River Golf Club
14 Twilight Dinner (Foundation Benefit) - LIFeSTYLE
23 Youth Leadership Bedford County Summit
TBD Young Entrepreneur Symposium*, TBD

April

- 12** Community Reading Day* - Bedford Co. Elem. Schools
15-16 Home, Garden, Lifestyle & Outdoors Show - Fairgrounds
20 Touch a Truck Career Fair* - Bedford Co. Airport

May

- 4** 5th Grade Career Field Day* - Bedford Co. Airport
11 Women in Business Spring Conference - Bedford Springs
28 Silver Lining Drive-In Movie Series - Fairgrounds
 (Memorial Day thru Labor Day—Select Saturdays)

June (Bedford County Heritage Days Promotion)

July

- 23-29** Fun Farm Facts at the Fair - Bedford County Fair
28 Chamber Golf Tournament - Down River Golf Club

August

- 1** National Night Out* - Bedford (Penn Street, tentative)
11-13 PA Lumberjack Championships - Living Water Camp

September

- 16/17** Bike Bedford County Start/End at Shawnee State Park
21 Annual Dinner & Awards Celebration - Airport Co. Airport
27 Downtown on the Farm Street Fair - Downtown Bedford

October

- 7,8,14,15** Bedford Fall Foliage Festival
10 7th Grade Ag. Career Fair* - Bedford Co. Fairgrounds
25 Business Community Showcase* - Bedford Co. Airport

November

- 2** Women in Business Fall Conference - Omni Bedford Springs
13-15 PA Assn. of Chamber Professionals Conference
25-27 Holiday Nights of Lights (Bedford Co. Fairgrounds)

December

- 2-23** Holiday Nights of Lights* (Bedford Co. Fairgrounds)
9 Breakfast with Santa (Homewood at Spring House)



Additional 2023 Dates TBD

Government: It's Your Business Speaker Series

Approx. Every 6 Weeks at Various Venues

Women in Business Power Hours (Via Zoom)

Wednesdays, Noon January thru March

Quarterly Membership Meetings

(January, April, July, October breakfast or lunch)

Distinguished Speaker Series

(Dates, venues vary)

Business After Hours Networking Mixers

Tentative Hosts & Available Opportunities

January 12 - Horn-O-Plenty

February 16 - Aesthetics by Kell

March 9 - SAMA Bedford Gallery

April 13 - UPMC Rehab Services

May 18 - Live Well Chiropractic

June TBD - Egolf Park Preserve

July - Available

August - Available

September - Available

October - Available

November - Available

December 14 - Russell House Christmas

(with sponsor/partners)

Other Initiatives (Details to Come)

Inclusion/Workforce Council

Executive Leadership Roundtable

Education & Issues Events (as needed.)

CONTACT US FOR MORE INFO:

Kellie Goodman Shaffer, President-CEO

Sarah Ferrari, Programs & Events

Deanna Weaverling, Membership & Marketing

Gwen Querry, Workforce & Education

*Foundation Events



The Bedford County Chamber Foundation is the 501-c3 educational organization administrated by the Bedford County Chamber of Commerce, and eligible to accept donations through the DCED Educational Improvement Tax Credit (EITC) Program.

Founded in 2020, the Foundation presents unique educational programs for students and adults of the Bedford County region. From day one, the flagship program was and remains Leadership Bedford County, a unique 10-month class that allows company representatives to build relationships and leadership skills while exploring the many facets of our region. More than 300 *servant leaders* have graduated from the LBC program. Applications will be accepted for the class of 2024 beginning in May 2023 (the class begins with an August orientation and continues with one (or occasionally 2) meetings per month through June.

Youth Leadership Bedford County is a teen-version of the adult program, designed for 10th graders (applying as freshmen.)

BASICS programming (Businesses and Schools Investing in Cooperative Solutions) has expanded exponentially in recently years, connecting students with the business community and potential future careers in every grade, Pre-K thru 12, and our premier partnership with Allegany College of Maryland adds even greater value to Chamber member businesses, providing ongoing trainings and resources for company enrichment.

Opportunities abound for businesses to invest and take part in our many programs and events provided to area youth, who never pay to participate, making these workforce development opportunities available to any student, regardless of economic circumstances.

NEW in 2023, our MVVP program Mission-Vision-Values-Partners, with investment packages supporting all of our foundation career programs, or businesses may sponsor/attend/support individual events on an ala carte basis, as laid out on the following pages.

As a 501-c3 organization, Chamber Foundation investments may be eligible for tax benefits. Consult your tax preparer for details specific to your business or organization.



The Programs & Resources of Bedford County BASICS

Pre-K thru 3rd Grades
Community Reading Day

3rd & 4th Grades
Touch-A-Truck

5th Grade
Interactive Career Field Day

Junior-Senior High
Showcase Career Fair
7th Grade Ag Career Fair
Youth Leadership Bedford Co.
Youth Leadership Summit

Educators & Business Leaders
BASICS Summit

Business Resources for Schools
**Chamber Directory &
Community Profile Publication**

~!~

**Direct Referrals Linking
Businesses & Schools**

General Info
BASICS Website

**Bedford County Works
Facebook Page**

Businesses And Schools Investing In Cooperative Solutions

Greetings Members and Friends,

It is with great pleasure and pride that the Bedford County Chamber Foundation presents our newly-expanded BASICS initiative. (Businesses & Schools Investing in Cooperative Solutions.)

In these particularly challenging times for the business community seeking talent, our foundation has expanded our mission to cultivate a home-grown workforce of the future by providing unique career exploration opportunities for the students of the Bedford County region. This now includes fostering a connection between business and schools for students in all grades, pre-K through 12.

Our aim is to expose students to the vast variety of career opportunities available to them among our vibrant business community. In many cases, this means planting seeds of interest that will hopefully yield a bumper crop of community leaders and employees for many years to come. Through each event and resource we also weave in messages of positivity and pride in our region and all of the quality-of-life benefits it affords.

We thank all of the schools and businesses who join us in working together to create these valuable opportunities for students, including career fairs, soft skill programs, leadership development, literacy and entrepreneur programs, and so much more.

And now, we are so pleased to present a new way to support these initiatives while promoting your business or organization as **MWVP's: MISSION-VISION-VALUES PARTNERS**. We hope you will consider joining the ranks of our MWVP's as we promote Bedford County to the next generation as a wonderful place to live, work, play and prosper.

Thank you,

Kellie Goodman Shaffer, President-CEO





BECOME A WORKFORCE DEVELOPMENT MVVP MISSION-VISION-VALUES PARTNER

*The Bedford County Chamber of Commerce invites businesses, organizations and individuals of the Bedford County region to join us as MVVP's—**Mission-Vision-Values Partners** of the Chamber's 501-c3 Education Foundation, providing career exploration, leadership, literacy, and entrepreneur initiatives and workforce development programs for students (and adults) of the Bedford County region. Our MVVP's will be recognized as key partners in ALL of our BASICS programs, and featured with prioritized placement as sponsors and/or exhibitors of our career exploration programs with several investment options.* (Please note, our programs ARE eligible for funding through Pennsylvania 's EITC (Educational Improvement Tax Credits) program.

\$3,500 — PLATINUM MVVP

- Recognition among the most ardent and visionary supporters of the Chamber Foundation mission in all workforce development and career exploration programs presented by the 501-c3 Chamber Foundation.
- Most premium (largest, top) logo placement on MVVP banner to be displayed during all Foundation Programs
- Promotional video placed on BASICS website highlighting your company as an Education/Foundation MVVP
- Logo/Link inclusion on Foundation and BASICS web pages, Chamber email marketing and social media posts.
- Complimentary featured exhibit space, speaking opportunity (if desired) and attendee meals for all Foundation education programs.

\$2,500 — GOLD MVVP

- Recognition among the gold-level supporters of the Chamber Foundation mission in all workforce development and career exploration programs presented by the 501-c3 Chamber Foundation.
- Featured placement on MVVP banner to be displayed during all Chamber Foundation Programs
- Logo/Link inclusion on Foundation and BASICS web pages, Chamber email marketing and social media posts.
- Complimentary exhibit space and attendee meals for all Foundation education programs.

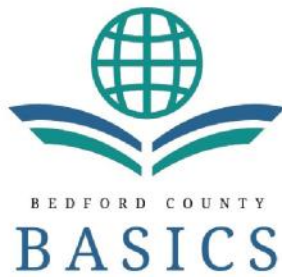
\$1,500 — SILVER MVVP

- Recognition among the silver-level supporters of the Chamber Foundation mission in all workforce development and career exploration programs presented by the 501-c3 Chamber Foundation.
- Logo included on MVVP banner to be displayed during all Chamber Foundation Programs
- Logo/Link inclusion on Foundation and BASICS web pages, Chamber email marketing and social media posts
- Complimentary exhibit space and meals for all Foundation education programs.

\$750 — BRONZE MVVP

- Recognition among the bronze-level supporters of the Chamber Foundation mission in all workforce development and career exploration programs presented by the 501-c3 Chamber Foundation.
- Name listed on MVVP banner to be displayed during all Chamber Foundation Programs
- Logo/Link inclusion on Foundation and BASICS web pages, Chamber email marketing and social media posts.
- Complimentary exhibit space and meals for all Foundation education programs.

All MVVP partner investments include first right of acceptance to renew annually. In-kind contributions will also be recognized using the above guidelines. Call Kellie Goodman Shaffer to discuss details: 814.623.2233.



BASICS Programs and Resources

Youth Leadership Bedford County

The mission of Youth Leadership Bedford County is to endow youth with the knowledge and ability to become confident leaders as well as an understanding and appreciation of the business community of Bedford County and the career potentials herein. This ten-month leadership training program for a select group of at least 24 Bedford County high school sophomores consists of team building activities, leadership training sessions, and an awareness of resources, services and issues specific to Bedford County. This program becomes a pivotal life experience for the participants who will serve in leadership positions today and in the future. A service project is also included as part of the class experience.



COMMUNICATION SESSION



REI VISIT

Youth Leadership Bedford County Summit

Due to the growing number of YLBC applications and students seeking leadership opportunities, an additional Youth Leadership offering was added in 2017 in the form of a county-wide Sophomore Summit, which brings 50 tenth-graders together for interaction with community leaders, team-building challenges, keynote speakers and SWOT Analysis/Visioning small group exercises, with results provided to county and region leaders for inclusion in the larger strategic planning processes.

All students receive a certificate of completion of the one-day program, in addition to the unforgettable experience.



YOUTH LEADERSHIP SUMMIT

Steps to Success – Enhancing Job Opportunities

Steps to Success, held the last Wednesday of February at the Omni Bedford Springs Resort, is geared toward high school students entering the workforce for the first time. The program focuses on the principals relating to finding a job, keeping a job, being an excellent employee, and learning employee rights and benefits. The program format offers guest speakers, skits, team building activities, games, tours and a job fair, showcasing an array of careers available in Bedford County. Many of the businesses bring applications or instructions for pursuing positions online, and encourage students to apply for summer or part-time jobs with local companies. In addition, students hone their communication skills through small group interview sessions with local business leaders, Representatives from regional colleges the military are also in attendance to meet with the more than 100 participating students.



Business Community Showcase Career Fair

The Chamber has expanded its previously-existing Business Community Showcase to now include a morning session designed specifically as a career fair for high school students, and an afternoon middle school career session for grades 6-8. With more than 50 businesses and organizations exhibiting, including our partners from the Rotary Clubs of Bedford County, we are able to provide a snapshot of our diverse business community for area students, and with it, a look at the many future career opportunities available to them. In addition to booth and table displays, we provide an area for individual professionals to meet with students and discuss their careers. A brief keynote speaker also provides inspiring messages to the students (e.g. Olympian Natalie Dell, entrepreneur Adam Wiley, PA Secretary of Transportation Leslie Richards, Steelers Quarterback Charlie Batch, PA Representative Jesse Topper and other leaders.)

BEDFORD COUNTY CHAMBER OF COMMERCE BUSINESS COMMUNITY SHOWCASE *and Career Fair*

1200+ Students
over 2 sessions
at the Bedford
County Airport



50+ Businesses



Interactive Exhibits



Educator in the Workplace

This program is designed to give educators a look inside local businesses. Teachers, counselors and administrators are invited to spend time in unfamiliar environments, from hospitality to manufacturing & distribution. The educators are treated to guided tours with the opportunity to meet business owners, managers and HR professionals, who share the skills and qualities needed by their employees. The lessons learned are then shared with their students as the teachers and administrators prepare future curriculum and other educational offerings.



Agri-Business Education Month & Jr Hi Ag Career Fair

One in every seven Pennsylvania jobs is related to agriculture. Recognizing the significant role the industry plays in our region, the Agri-Business Career Fair (generally geared toward 7th graders) offers students the chance to meet and interact with a wide variety of professionals in many aspects of agriculture. From forestry to biotechnology and conservation to mechanics, students in classroom groups complete a circuit of interactive stations to get a glimpse of the almost-unlimited number of opportunities in agriculture-related fields.



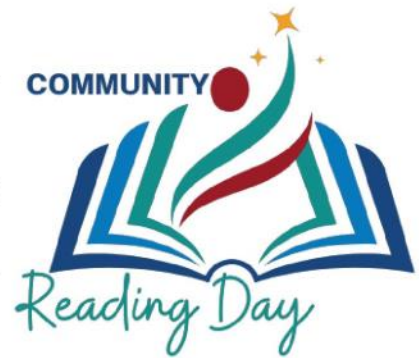
Exploring Career Interests: 5th Grade Career Field Day

Bedford County's 5th grade classes descend upon the Bedford Co. Airport for a day of career exploration with local businesses! Classes visit more than a dozen interactive stations featuring various career clusters, including STEM, mechanics, art, finance, and so much more. Classes are encouraged to de-brief and/or write impressions of the day to fulfill Pennsylvania curriculum requirements.



Community Reading Day

Celebrating its 24th anniversary in 2023, Community Reading Day is a literacy initiative presented in partnership with the Federated Library System of Bedford County. The program mobilizes more than 100 business leaders to visit all PreK-3rd grade classrooms. The servant leaders share selected books with more than 2,500 students. They also discuss their careers and the importance of reading. Each classroom is presented with a book while each child receives a bookmark or sticker to remember this special day.



TOUCH A TRUCK

We all know that kids love trucks. What better way to showcase careers in the Bedford County region, than by allowing third and fourth grade students to TOUCH A TRUCK, and explore the many different opportunities that go along with every vehicle.

From firetrucks and ambulances to construction equipment and so much more... students enjoy climbing into the driver's seat while speaking to drivers, equipment operators and other skilled professionals, planting seeds of interest for high-value careers of the future. This event is held at the Bedford County Airport in April, and includes three sessions for more than 1,200 Bedford County elementary students.





YES! Young Entrepreneur Symposium

New in 2023, the Chamber Foundation is pleased to present a one-day seminar to introduce high school students to the path toward owning their own business. Utilizing resources of Start-Up Alleghenies, Saint Francis Small Business Development Center, and a wealth of experience from local entrepreneurs, students will have a chance to DREAM BIG about new businesses that could enrich Bedford County for generations to come.



BASICS SUMMIT (Next event: Fall/Winter 2023)

Bringing business leaders and educators together annually for a dynamic conversation about ways we can all work together to prepare today's students for tomorrow's career opportunities in Bedford County and beyond. Important connections and valuable synergies are created when these passionate and visionary individuals come together for the betterment of our community.

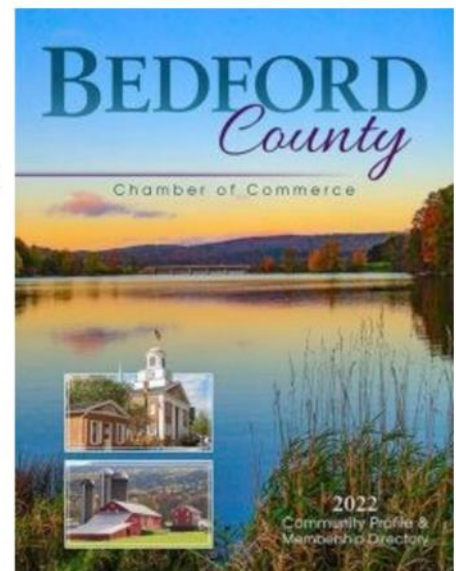


Chamber Membership Directory & Community Profile Publication & Referrals

The Bedford County Chamber of Commerce is pleased to provide copies of our annual *Community Profile Publication and Membership Directory* to all Bedford County schools, particularly for career exploration purposes.

Schools are also welcome to contact the Chamber staff for recommendations and referrals of professionals for career presentations and other opportunities within area schools and communities.

Additional copies of the publication are available at no charge upon request. Much of this information is also available on the Chamber website: www.BedfordCountyChamber.com.



Bedford County Works

A Facebook Group sharing job openings, career opportunities, candidate leads and more...

Learn more: facebook.com/groups/bedfordcountypaworks

Cultivating
Kindness and
Volunteerism
Throughout
the Year



MILLION MINUTE PROMISE

2023 KINDNESS INITIATIVE

PLEDGING OUR TIME TO HELP OUR COMMUNITIES

The Bedford County Chamber Foundation and Bedford County Chamber of Commerce are excited to announce a new Kindness Initiative: The **Million Minute Promise** will track time pledged toward acts of kindness, volunteerism, and giving back to the community with a collective **MILLION MINUTE GOAL IN 2023!**

In partnership with Impel Web Development, citizens of all ages have the opportunity to join in this effort by promising to spend minutes rather than money toward the kindness initiative through our online platform. This project is designed to address two pandemic-fueled issues: 1) the vital need for volunteers in our non-profit/community/service partners and 2) the need to re-connect citizens to one another and to the community, especially those impacted by the "covid fatigue" felt by many in our region.

- **Value of Volunteering: Why it's important to show kindness by volunteering in your community.**

- Volunteers bolster non-profit organizations, providing free man-power.
- Volunteers offer talent and energy toward an organization's mission and goals.
- Volunteers help meet the needs of the local community.
- Volunteers help our region be the best place possible to live, work, play and prosper.
- Volunteering helps to support people in need in our community.

- **Value of Volunteering: What you gain from giving back to others through service**

- Volunteers FEEL GOOD by doing good works and MAKING A DIFFERENCE.
- Volunteers enjoy improved well-being and decreased stress.
- Volunteers build valuable experience and skills.
- Volunteering can expand your personal and professional network.
- Volunteering can help prepare you for the future.

- **Paths Toward Volunteering: Places to Make a Difference are Plentiful**

- | | |
|------------------------------------|--------------------------------------|
| ○ Schools | ○ Home construction organizations |
| ○ Churches | ○ Libraries |
| ○ Senior centers | ○ Soup kitchens |
| ○ Youth programs & sports teams | ○ Parks and trails |
| ○ Fundraising events | ○ Service Organizations |
| ○ Hospitals & health care settings | ○ Military & First Responder Support |
| ○ Animal shelters | ○ And So Much More! |

Powered by:
IMPEL
Web Development

MILLIONMINUTES.BEDFORDCOUNTYCHAMBER.COM



**Wednesday, February 22nd
8:30am-2pm
Omni Bedford Springs Resort**

Sponsor...Exhibit...Connect

Support Steps to Success...Enhancing Job Opportunities

Interact with more than 100 students from Bedford County schools as they prepare for their first work experience! Students take part in presentations throughout the day and visit with business exhibitors to learn about Career & educational/training opportunities in our region.

Event runs from 8:30am-2:15pm—Sponsors/Exhibitors may set up in time to greet the arriving students between 8:15 and 8:30; or you may arrive by 10:45am in time to take part in the 120 minute circuit, including exhibitor visits, lunch, small group mock interviews and facility/career tours. Please let us know which option you prefer, as early arriving exhibitors will be placed closer to the front of the ballroom. All students will be encouraged to visit all exhibitors as part of their day. Exhibitors are welcome to break down at your convenience after 1:15pm.

_____ Top Step Sponsor: \$500

- Logo recognition in pre & post event marketing
- Opportunity to offer remarks students during the day's program
- Company marketing materials distributed to all participants (company provides)
- 8-foot Exhibit Area to promote your business and/or offer job applications
- Opportunity to provide door prizes for student drawing; 4 complimentary lunches

_____ Landing Sponsor: \$350

- Listing in all pre & post event marketing
- Be among the first to talk to these now-equipped students about a job
- 8-foot Exhibit Area to display your materials and/or offer job applications
- Opportunity to provide door prizes for student drawing; 3 complimentary lunches

_____ Threshold Exhibitor: \$150

- 8 -foot Table/Exhibit Area to display your materials and/or offer job applications
- Opportunity to provide door prizes for student drawing; 2 complimentary lunches

Business/Organization Name _____

Contact: _____

Phone: _____ E-mail: _____

Attending: _____

Your contribution is payable to the 501-c3 Bedford County Chamber Foundation.

Additional Lunches are \$25 per person.

**Please Return Form to: Bedford County Chamber Foundation
203 South Juliana St., Bedford PA 15522**

Community Reading Day



April 12, 2023

The Bedford County Chamber Foundation is proud to present our 23rd Annual Community Reading Day for the Pre-K thru 3rd Graders of Bedford County. Community leaders from local businesses will visit more than 100 classrooms throughout the county, reading this year's chosen books and discussing the importance of literacy in their occupations. Each student receives a special bookmark featuring the program sponsors, and each classroom receives a copy of the book to keep and enjoy for months and years to come. We invite you to consider sponsoring this event, which benefits the students of Bedford County, and serves as a valuable tool to promote your business or organization. (The Chamber Foundation is a 501(c)(3) educational organization.)

Sponsorship/Partnership Opportunities

Book Sponsor: \$500 *or 2 companies many share sponsorship of a grade @ \$250 ea.)*

- * Exclusive – One Available Per Grade (Pre-K, Kindergarten, First, Second and Third Grades)
- * Logo included on bookplate stickers & bookmark for your grade's classroom/students
- * Logo/Link included on the Chamber website program page & in Chamber E-Mail Marketing
- * Opportunity for company/organization representatives to participate as readers
- * Plaque presented to sponsor recognizing partnership/book donation for display

Bookmark Sponsor: \$100

- * Logo included on bookmarks presented to all 2nd and 3rd graders in Bedford County
- * Listing included on the Chamber Website program page & in Chamber E-Mail Marketing
- * Opportunity for company/organization representatives to participate as readers (if available)
- * Certificate presented to sponsor recognizing partnership/book donation for display

**For more information, contact Education/Workforce Coordinator, Gwen Querry
At the Chamber Office: (814) 623-2233 Or e-mail: Gwen@BedfordCountyChamber.org**

COMING
SOON

MARCH 2023 (Date TBD)

Young YES! Entrepreneur Symposium

Reach for the future and reach the goal
of becoming a successful entrepreneur!

8th Graders Invited— Details Coming Soon!



A new program of the Chamber Foundation/Bedford County BASICS series—*Exploring Entrepreneurism*.
Support this event as a patron, or student mentor/volunteer as we build the business community of tomorrow!

___ **PRESENTING PARTNERS: \$500** - Most prominent Logo/link and display exposure before and during event.
- Speaking and student mentor opportunity (optional)
- 4 lunches, exhibit space & opportunity to place promo item in student gift bag

___ **LUNCH SPONSOR: \$350** - Prominent Logo/link and display exposure before and during event
- Speaking opportunity prior to lunch with 3 lunches & exhibit space if desired
- Opportunity place promotional item in student gift bags.

___ **EXHIBITOR: \$250** - Logo/link and display exposure before and during event featured as exhibitor
- 2 lunches, exhibit space & opportunity place promotional item in student gift bags.

___ **SUPPORTING SPONSOR \$150** - Logo/link and display exposure before and during event
- Opportunity place promotional item in student gift bags.

Business/Organization Name _____

Contact: _____

Phone: _____

E-mail: _____

Attending: _____

Your contribution is payable to the 501-c3 Bedford County Chamber Foundation.

Additional Lunches are \$25 per person.

**Please Return Form to: Bedford County Chamber Foundation
203 South Juliana St., Bedford PA 15522**



Elementary Career Fair
Thursday, April 20th
Bedford County Airport
SPONSOR ~ EXHIBIT ~ SUPPORT
 Hundreds of elementary students
 as they explore and discover local
 careers through your company vehicles!

SCHOOL DISTRICTS INVITED: Bedford, Chestnut Ridge, Claysburg-Kimmel, Everett, Northern Bedford, Tussey Mountain Plus Charter, Private and Home School Students

SPONSORSHIP INVESTMENTS & BENEFITS

_____ **Presenting Partners: \$250**

Logo recognition as partner in pre & post event marketing & 4 Comp. Lunches, inclusion in *The Vibe* video recap of the event.

_____ **Supporting Sponsor: \$150**

Logo recognition as sponsor in pre & post event marketing & 2 Comp. lunches

_____ **Exhibitor: \$75**

Exhibit Space & 1 Complimentary Lunch

Business/Organization Name _____

Contact: _____

Phone: _____ E-mail: _____

Attending: _____

Your contribution is payable to the 501-c3 Bedford County Chamber Foundation.

Please Return Form to: Bedford County Chamber Foundation
203 South Juliana St., Bedford PA 15522

Phone: 814-623-2233 / Fax: 814-623-6089 / Or Email: gwen@bedfordcountychamber.org



SPONSORSHIP & EXHIBITOR INFO

Participation as part of a Career Cluster Station is Free (Bring a bag lunch.)
For additional exposure/marketing benefits, sponsorships are available.

(The Chamber Foundation is a 501-c3 non-profit organization.)

MAY 4, 2023

SPONSORSHIPS & BENEFITS:

Title sponsor (\$500) - Recognized as the “presented by...” sponsor— featured display—website logo/link on event page of Chamber website—opportunity to distribute materials to the students, plus Chamber marketing (3 newsletter inserts or 3 months of e-mail advertising, plaque to display in your business)

Featured Sponsor (\$250) - Recognized as an event patron—career day display—web logo/link—material distribution to students—1 month of newsletter insert or e-mail advertising, display plaque)

Supporting Sponsor (\$100)

Career day display—web logo/link, material distribution, display certificate

SPONSOR REGISTRATION

BUSINESS _____/PHONE _____

CONTACT NAME _____/EMAIL _____

Proposed Activity/Display _____

Notes/Special Needs: _____

**Please return this form or email information no later than April 20th to Gwen Query.
For more info, contact: 814.623.2233 / gwen@bedfordcountychamber.org**

AGRI-BUSINESS CAREER FAIR



Sponsorship Opportunities: **7th Grade Agri-Business Career Fair**

Tuesday, October 10th - Bedford County Fairgrounds (9am-2pm)

BLUE RIBBON SPONSOR Exclusive—Only One for Each Event (or 2 businesses may agree to share @ \$750 ea.) **\$1,500**

- * Title Sponsor Recognition (i.e. Presented by...<YOUR COMPANY HERE>
- * Multi-Media Logo/Link Exposure (Print, Display, Radio, Direct Mail, Chamber website/social media, etc.)
- * Most Featured, Double-Booth Display (if desired) during event(s) & banner recognition
- * Opportunity to provide welcome remarks (if desired)
- * First right of acceptance to renew for future events.

RED RIBBON SPONSOR (Your Name on a specific element of an event, e.g. entertainment, bus, etc.) **\$500**

- * Multi-Media, logo/link Exposure (Print, Display, Radio, Direct Mail, Chamber website/social media, etc.)
- * Featured display space (if desired) during event(s) & banner recognition
- * First right of acceptance to renew for future events.

GREEN RIBBON SPONSOR (Supporting Sponsorship) **\$250**

- * Multi-Media Listing Exposure (Print, Display, Radio, Direct Mail, Chamber website/social media, etc.)
- * Display space (if desired) during event(s)
- * First right of acceptance to renew for future events.

YELLOW RIBBON SPONSOR (Friend of the Event) **\$100**

- * Multi-Media Listing Exposure (Print, Display, Direct Mail, Chamber website/social media, etc.)
- * Display space (if desired) during event(s)
- * First right of acceptance to renew for future events.
- * 2 Event Registrations, where applicable (see below for details)

EXHIBITOR - Space + 2 exhibitor lunches **\$50**

Please Note: All exhibitors, including sponsors must bring their own tent, tables, etc. and must provide proof of insurance. This event is held OUTDOORS (in the barns of the Bedford Co. Fairgrounds - dress accordingly.)

Please register my company for the AgriBusiness Career Fair
at the Bedford County Fairgrounds - Friday, October 10th.

Set Up: 7:30-8:45am (must be ready to greet students at 9am)
(Additional set-up may be available Thurs. evening
- call us if this option is needed for your display.)

___ BLUE	\$1500 (Exclusive)
___ BLUE	\$750 (Shared)
___ RED	\$500
___ GREEN	\$250
___ YELLOW	\$100

Business Name _____ / Phone _____

Contact Name _____ /Email: _____

Total Due: \$ _____

Return to: Gwen Query
Bedford County Chamber of Commerce
203 S. Juliana St. Bedford, PA 15522
Email: gwen@bedfordcountychamber.com
Phone: 814-623-2233 **Fax:** 814-623-6089



Bedford County
Chamber of Commerce

Leading Businesses. Leading Communities.™

FUN FARM FACTS *at the Fair*

EDUCATION PARTNERSHIP

The Chamber is pleased to share unique and interesting information about Bedford County and Pennsylvania agriculture through colorful Fair posters sponsored by local businesses.

**July
22-29
2023**



Businesses may sponsor posters @ \$30 each or 2 for \$50.
Additional sponsorships (presenting partner & supporting sponsor)
are also available. Call 814.623.2233 for more information

BedfordCountyChamber.com



Fun Farm Facts at the Fair Education Partnership

The Chamber's Agri-Business Committee is proud to partner with the Bedford County Fair in 2023 to present our 12th edition of FUN FARM FACTS AT THE FAIR! This is a special opportunity to explore the fairgrounds and learn more about agriculture in a fun and unique way. The Chamber will hang brightly-colored posters with interesting facts about the importance of agriculture in our region. Fair-goers will be invited to seek out answers on a worksheet to a series of questions (found on the posters). Participants can then turn in their completed worksheets for a drawing to win special prizes at the end of fair week.

Presenting sponsorships are available for this event:

"Best in Show" Exclusive Title Sponsorship: \$500

Includes: Name included as title sponsor on all program advertising & marketing
Print, Radio, Web, Direct Mail & Email
Logo and Link on event page of the Chamber website
Logo featured on question/answer page distributed at the fairgrounds
Logo included on all event fact posters
Right of first refusal to renew sponsorship annually

"Blue Ribbon" Supporting Sponsorships: \$250 each

Includes: Name included as supporting sponsor on all program advertising & marketing
Print, Radio, Web, Direct Mail & Email
Logo and Link on event page of the Chamber website
Logo included on question/answer page distributed at the fairgrounds
Right of first refusal to renew sponsorship annually

"Fun Farm Fact" Poster Sponsorship: \$30 each (or 2 for \$50)

Sponsor logo will be included on one farm fact poster, with choice of topic available
Listing on Chamber website, question/answer page distributed at Fairgrounds
Listing in Web, Direct Mail & Email Advertising
May sponsor multiple Fact Posters

YES, I want to sponsor the Fun Farm Facts at the Fair Educational Partnership!

Business _____

Contact Name _____

Phone _____ Email _____

Preferred Sponsorship _____ Cost: \$ _____

Or Number of Facts You'd Like to Sponsor: _____ x \$30 each = \$ _____
(or 2 for \$50) (Total Cost)

Preferred Topic(s) to Sponsor _____

Please return this form to kellie@bedfordcountychamber.org no later than June 30, 2023

CHAMBER/FOUNDATION EVENT PARTNERSHIPS

The Bedford County Chamber and Chamber Foundation are pleased to lend our support to several community events, providing opportunities for local businesses.

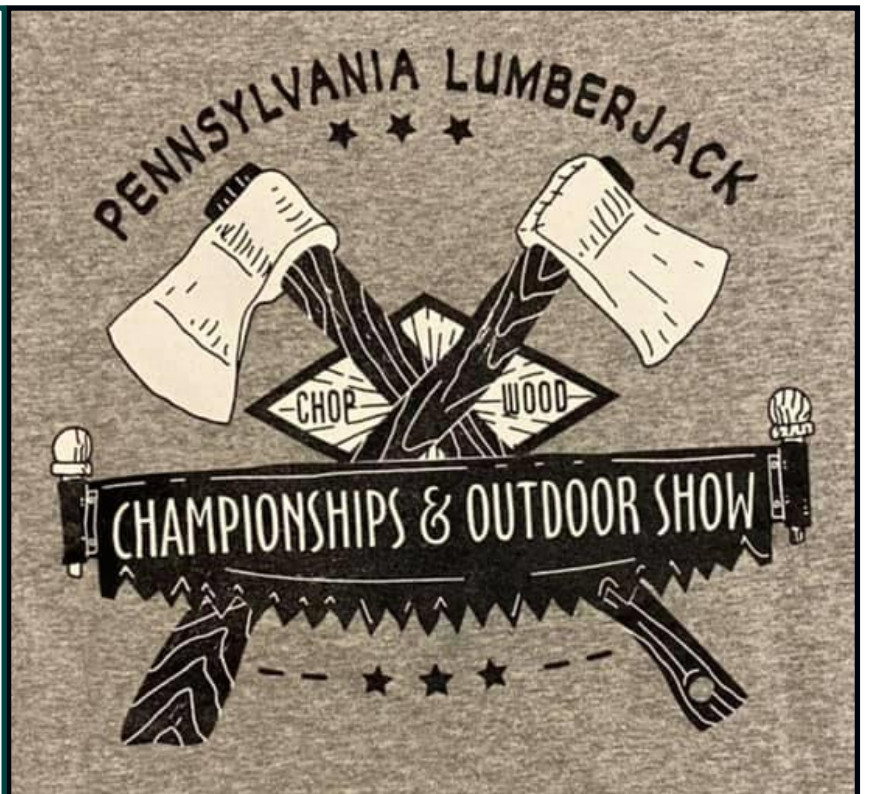


The PA Lumberjack Championships and Outdoor Show is a popular event held annually the second weekend of August at Camp Living Water in Schellsburg.

The event draws dozens of world-class professional lumberjacks and thousands of spectators to enjoy the Friday evening/Saturday/Sunday competition.

The event also features a vendor show with opportunities to sell food and other products.

The Chamber assists the Brouse family with recruiting sponsors and vendors for this event.





Business Community



SHOWCASE

CONNECTING LOCAL BUSINESSES WITH THE WORKFORCE OF THE FUTURE

Join us for the county's largest career fair!

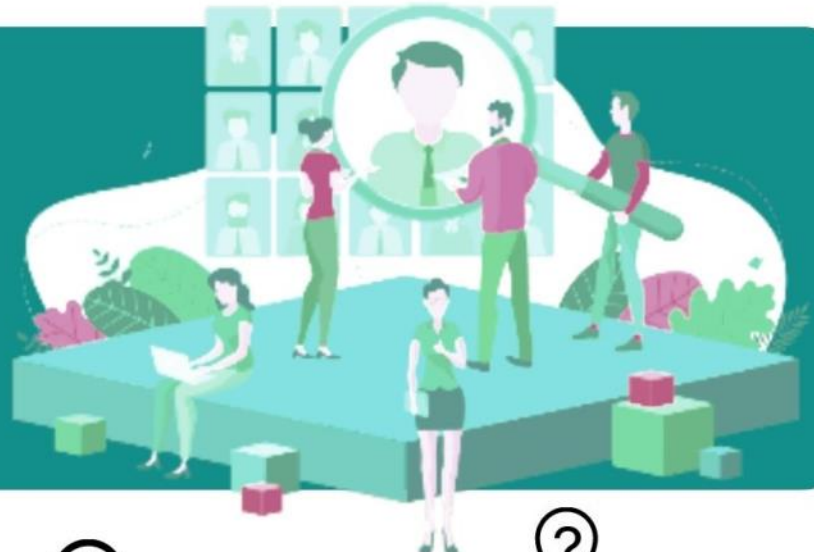
8:00 AM - B2B COFFEE & DONUTS HOUR

9:00 AM - High School Career Fair

11:30 AM - NETWORKING LUNCHEON/SPEAKER

1:00 PM - Middle School Career Fair

- Sponsor
- Exhibit/Mentor
- Attend/Network



OCT 25, 2023



7:30am - 2:30pm



Bedford Co. Airport

Call Sarah or Gwen for Info or to Register: 814.623.2233



2023 SPONSORSHIPS & BENEFITS

Wednesday, October 25th, 2023
At the Bedford County Airport

SHOWCASE

- ♦ **\$1,500 EXCLUSIVE PLATINUM PRESENTING SPONSOR (Only 1)** This is our most prestigious and highest-profile sponsor investment! Benefits include premier table exhibit space (2 comp tables, 4 comp chairs) reserved table of 8 for lunch, full-color, back-page program ad and opportunity to give welcome comments during lunch program, and all related exposure as the “Presenting Partner” on all event materials:
i.e.. “Business Community Showcase presented by <YOUR COMPANY>”) Plus... Additional benefits may be agreed-upon by the Chamber/Foundation & sponsor.
- ♦ **\$1,000 LUNCH SPONSOR (Only 2)** - This unique sponsorship opportunity provides special recognition during lunch, including a preferred-seating table of 8, full-page color, premium-placement ad within the event program, inclusion on table tents, recognition/thanks by emcee during lunch program and opportunity to speak; prime placement of exhibit table (one comp table/2 comp chairs) and *additional benefits as may be agreed-upon by the Chamber/sponsor.*
- ♦ **\$750 BREAKFAST SPONSOR (Only 4)** - This unique sponsorship opportunity provides special recognition for the associated businesses, including a preferred-seating table of 8, full-page color premium-placement ad within the event program, recognition/thanks by emcee during awards program; and your opportunity to provide a branded gift to each attendee (approx. 200.) Plus... *Additional benefits may be agreed-upon by the Chamber & sponsor.*
- ♦ **SUPPORTING SPONSORSHIPS** - Includes sponsor recognition and benefits listed below and:
 - ♦ **Gold: \$500** – full-page (color) ad in the dinner program + four breakfast & lunch tickets and exhibit table
 - ♦ **Silver: \$350** – half-page (color) ad in the dinner program + three breakfast & lunch tickets and exhibit table
 - ♦ **Bronze: \$150** – quarter-page ad (color) in the event program + two breakfast & lunch tickets and exhibit table

PLEASE NOTE - ALL SPONSORS WHO INVEST \$500 OR MORE WILL RECEIVE:

- ♦ *Company name in all news releases*
- ♦ *Logo/Ad inclusion on table tents and other printed marketing pieces*
- ♦ *Recognition by program emcee during event; Logo/Link on event page of Chamber website;*
- ♦ *First right of acceptance to renew sponsorship next year.*

PROGRAM ADS: Promote your business/organization and/or congratulate one or more honorees:

- ♦ **\$150** Full Page (5.5" x 8.5" - black and white)
 - ♦ **\$80** Half Page (5.5" x 4.25" - black and white)
 - ♦ **\$50** Quarter Page (2.75" x 4.25" - black and white)
- (Program Ads must be reserved by October 12th and artwork must be provided no later than October 19th.)*

PLEASE RETURN REGISTRATION FORM (Next Page)

OR CONTACT THE CHAMBER VIA PHONE OR EMAIL WITH ATTENDEE NAMES NO LATER THAN OCTOBER 19th.

203 S. JULIANA STREET | Bedford, PA 15522 | Phone: 814.623.2233

Email: gwen@bedfordcountychamber.org or sarah@bedfordcountychamber.org



Sponsorship Registration Form

PLEASE PROVIDE ATTENDEE NAMES FOR EACH ELEMENT OF THE EVENT
(this info may also be emailed to sarah@bedfordcountychamber.org)

Company Name _____

Contact Name _____ / Phone _____

Email _____

Website _____

Address _____ City, State & Zip _____

Desired Sponsorship _____ Cost: \$ _____

(\$1500 - Platinum Presenting | \$1000 - Lunch | \$750 - Breakfast | \$500/\$350/\$150 - Supporting)

Attendees

COFFEE & DONUT ATTENDEES _____

(Comp per sponsorship,
Addtl, \$10)

LUNCH ATTENDEES _____

(Comp per sponsorship,
Addtl, \$25)

CAREER FAIR ATTENDEES _____

(FREE, No meals)

ADDITIONAL EXHIBIT NEEDS Provided: One 8' table, 2 folding chairs

Additional tables: \$15 ea. | Additional chairs— \$5 ea. | Tablecloth (black or white, as available) —\$10 ea.

Do you need electricity? (no charge, but please let us know for table placement) ____YES ____NO

SPONSORSHIP COST \$ _____

Select One:

Additional Attendees \$ _____

____ Check Enclosed

Additional Exhibit Needs \$ _____

____ Please Invoice

TOTAL DUE \$ _____

Please Return this Form (or call with info) to the Chamber Office No Later Than October 19, 2023

Note: Sponsorship seating provided as available. Register early as this event may sell out.

2023 BUSINESS COMMUNITY SHOWCASE TERMS & CONDITIONS

1. Space Agreement: Management may assign space based on the nature of the company and products to be displayed as well as the amount of space available in the effort to promote and develop the most professional and balanced show. Show management reserves the right to refuse space because of unethical or illegal business practices.

2. Subletting of Space: No exhibitor shall assign, sublet or apportion the whole or any part of the space allotted to them, nor exhibit therein any other goods, apparatus, service, advertising signs, etc. than those manufactured or sold by the exhibitor in the regular course of his business. Violations of this rule shall be cause for eviction without refund.

3. Installations of exhibits: Set up will be Tues. Oct. 24th, 1PM-5PM and Wed. Oct, 25th 7:00 AM to 9:30 AM. (All installations must be completed by 9:30 AM for student arrivals.)

4. Dismantling: Booths **MUST BE** dismantled immediately following the closing of the show hours (3pm Wed. Oct. 25)

5. Relocation of Exhibits: Management reserves the right to alter the location of exhibitors or of booths as shown on the official floor plan if deemed in the best interest of the exposition. Management shall have the further right to prohibit, prevent, and remove any exhibit or proposed exhibit, or any part or portion thereof, which in the judgment of management is unsuitable or inappropriate for the exhibition or purposed of such exhibition; and such right shall exceed, but shall not be limited to, all equipment, materials, displays, installation and other items consulting part of or used in connection with any such exhibit.

6. Arrangement of Display: Exhibitors are required to arrange their displays so as not to obstruct the general view or conceal other exhibits. It is suggested that exhibitors having large or bulky exhibits REQUEST wall space. Any display materials exposing an unfinished surface to neighboring booths must be finished at the exhibitor's expense.

7. Signs: No signs or banners are to be placed outside of the exhibit space assigned to the exhibitor. Any exhibitors displaying signs, which are or look amateurish or unprofessional and detract from the integrity of the show may be required to remove such signs or pay a banner fee of \$150 at the discretion of the show management.

8. Sound Control: Loud speakers, radios, television sets, and/or the operation of any type of product, machinery, equipment which is of sufficient volume as to be annoying or hazardous to the neighboring exhibitors will not be permitted. Public address systems used to attract the attention of people passing in front of your booth is not permitted.

9. Electrical Needs: Every booth will have access to one standard 110 VAC electrical outlet if indicated on registration form. Exhibitor must supply their own electrical cords.

10. Flammable Materials: All materials used in the exhibit hall must conform to the fire regulation of the local fire department. All packing paper, excelsior and wrapping materials are to be removed from the floor and must not be stored under the tables or behind displays. Materials not conforming to such regulations will be removed immediately at the exhibitor's expense.

11. Care of building and exhibits: Exhibitors will be responsible for any damages done to the building by themselves, their agents, or employees. All property destroyed or damaged by exhibitors must be placed in its original condition by the exhibitor or at the exhibitor's expense. Walls, woodwork, and the floor in the building must not be defaced or altered in any manner. Tackling, taping or nailing of signs, banners, etc. to any permanent walls or woodwork or beyond the limits of any background is prohibited. No nails or bracing wires used in erecting displays may be attached to the building. Exhibitors will be required to keep their booth displays neat and orderly throughout the show. Exhibitors using unauthorized tape or demo materials will be charged for restoration or removal from damaged surfaces.

12. Liability: It is expressly agreed that the Management will not be liable to the Exhibitor, or their employees, to their guests, or the their agents, for any damage loss or injury from fire, water, storm, electricity, smoke, theft, labor dispute, civic commotions, or threats thereof, or acts of the other exhibitors. In the event the management is compelled to take charge of any property of an exhibitor, it will do so only at the exhibitor's own risk. However, the Show Management cannot be held responsible for exhibitor's property, whether located at his exhibit or anywhere else on the show location. Small and especially valuable materials should be safely packed away by the exhibitor during hours when his exhibit is not staffed. If the exhibitor feels that he needs additional protection to cover the hazards involved in the preceding paragraph, the exhibitor should take out their own insurance.

13 Rights of Management if event is not held: Management shall not be held liable for any damages or expense incurred by exhibitors in the event the show is delayed, interrupted, or not held as scheduled, for any reason beyond the control of the Management.

14. Cancellation of Contract: If this agreement is cancelled by exhibitor for any reason, or by Management because of exhibitor's default or violation of this agreement, monies paid to Management by exhibitor shall be retained as follows: If cancellation occurs within 30 days of the show, the entire rental paid to date by the exhibitor shall be retained by Management. The retained rental shall be liquidated damages for the direct and indirect costs incurred by Management for organizing, setting up and providing space for exhibitor's withdrawal including re-letting the space. All cancellations must be in writing.

15. Staffing: All exhibits must be maintained in complete and orderly form from the opening to the closing of the show and must be adequately staffed all the hours the show is open. Exhibits may not be dismantled until the close of Wednesday's show at 3:00 PM.

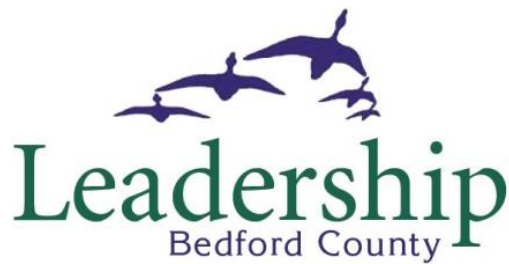
16. Sales: Transfer of goods and exchange of money is permitted on the show floor. Exhibitors may also sign contracts for purchases.

17. Liability Insurance: Exhibitors are required to provide a Certificate or Liability insurance naming the Bedford County Chamber of Commerce as a covered party. **WE MUST HAVE THIS document no later than one week before the show.** (Most insurance companies will fax directly to the Chamber (814-623-6089) if exhibitor requests them to do so.)

I HAVE READ AND AGREE TO THESE TERMS.

Exhibitor (Company Name) _____

Signature: _____ Date: _____



Building Our Leading Community.

MISSION

Leadership Bedford County (LBC) strives to enhance community leadership by challenging and preparing individuals from diverse backgrounds to assume active and effective roles in addressing the needs of our community.

VISION

Leadership Bedford County participants are a diverse group, engaged in the process, aware of themselves - individually and as a group - and challenged to become better servant leaders.

PROGRAM DESCRIPTION

Participants in Leadership Bedford County are challenged to explore the current issues facing our community from the vantage point of servant leaders. LBC provides insight as to how Bedford County functions as a community: culturally, socially, politically, economically & educationally.

The concept of LBC is to present participants with all the facts about issues facing our community, including the external forces that affect us. These issues are sometimes controversial; participants develop their own opinions and courses of action.

Leadership Bedford County employs a variety of educational approaches, including lecture, discussion, case studies, self evaluation, team building exercises, site visits, fact finding, and problem solving focused on issues facing our community. Facets of our community that are examined include: heritage, education, economic development, arts, recreation, tourism, workforce development, government, the judicial system, human resources, agriculture and more.

Participation in the program is open to individuals residing or working in Bedford County. Selection is based on the participants' sincere commitment to serve the community, demonstrated community involvement, and desire to make Bedford County a better place in which to live, work, play and prosper.

As of June 2021, 305 leaders have proudly graduated from Leadership Bedford County.

LBC SESSION TOPICS / TOURS / EXPERIENCES INCLUDE:

Orientation—Evening Meet & Greet, Program Overview

Retreat—2 Days (no overnight) at White Sulphur Springs & Shawnee State Park

Networking Lunch with Class Members & Advisory Board

History & Culture

Bedford Co. Leadership Day at the State Capitol in Harrisburg

Entrepreneurism & Economic Development

Education

Health & Human Services / Poverty Awareness

Protective Services / Judicial System

Local Government

Regional Leadership (*with Blair, Cambria, Huntingdon and Somerset*)

Agri-Business / Natural Resources

Recreation & Tourism

Visioning & Graduation

Class Project (determined by class)



LEADERSHIP CURRICULUM INCLUDES:

Greenleaf's Servant Leadership

From I to We

SWOT/Servant Leadership Outlook

Inclusive Leadership

EOS / The Leadership Challenge

Kim Scott's Radical Candor

Influential Communications

Visionary Leadership/Founding Fathers

Leaders & Burnout

Your Personal Mission Statement

And More





Class of 2024 Application

Application Deadline – July 15, 2023

Name: _____
Last First MI

Home Address: _____
Street City State Zip

Cell Phone: () _____ Email: _____

How did you become aware of Leadership Bedford County? _____

CURRENT WORK INFORMATION

Business Name: _____

Business Address: _____
Street City State Zip

Business Phone: () _____ Email: _____ Fax: _____

Current Position/Title: _____ Years of Service: _____

Briefly summarize your current job responsibilities.

COMMUNITY INVOLVEMENT

Please list in order of importance three organizations (i.e. community, civic, professional, religious, social, athletic, etc.) in which you are or have been a member during the past five years. Also list any leadership positions and/or significant contributions.

Name of Organization	Approximate Dates of Membership	Involvement
----------------------	---------------------------------	-------------

1.

2.

3.

How much time each month do you commit to community, civic, professional and other organizations and activities?

_____ hours each month

Why do you want to participate in Leadership Bedford County and what do you hope to gain from the program?

EDUCATION/TRAINING

Degree(s)

Institution

Dates of Attendance

Please list any seminar or training you have attended in the past five years regarding leadership, management, or community service topics.

Title

Date

Location

COMMITMENT

Attendance at a 2-day retreat in September, the monthly sessions from October through May, and a graduation program in June are mandatory. Persons who cannot adjust their schedules to accommodate these days should not apply. Class members are expected to attend each day session in its entirety. Are you and your employer willing to make such a commitment?

☐ Yes ☐ No

Full tuition (\$1,500) is due prior to the Retreat for applicants who are selected and will be paid by:

☐ Me personally

☐ My employer

☐ Organization sponsoring me

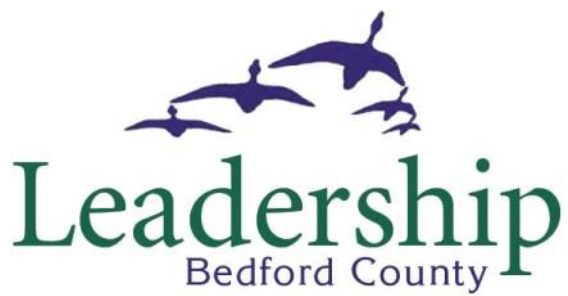
Do you need to be considered for partial financial assistance? ☐ Yes ☐ No

* If yes, provide a statement of why help is needed.

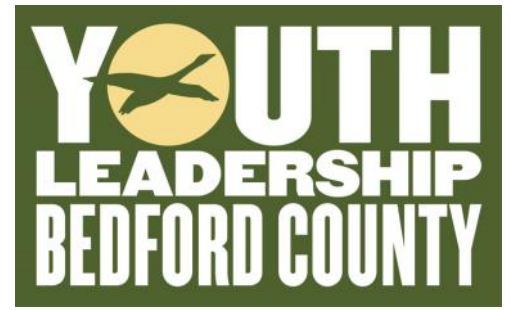
Do you prefer to be contacted ☐ At home ☐ At work

Signature: _____ Date: _____

Leadership Bedford County, a program sponsored by Bedford County Chamber of Commerce, adheres to EEOC guidelines and will not discriminate against individuals based on race, color, religion, sex or nationality.



Building Our Leading Community.



Building Our Leading Community

The Bedford County Chamber Foundation has been providing leadership development programs for more than two decades.

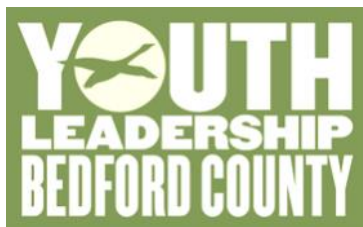
Leadership Bedford County is a 10-month servant leadership program for adults, boasting more than 320 graduates. Class members explore their own leadership skills and potential while traveling throughout the county, learning about our communities and seeking ways to make a difference. Class service projects have benefitted the county in many ways. Applications are being accepted for the Class of 2023 with interviews being held in the spring. The LBC class runs from August through June.

Youth Leadership Bedford County is a program much like the adult LBC offering, geared toward high school sophomores. Students from all of the area's high schools work through a curriculum based on Covey's *Seven Habits of Highly Effective Teens* while learning about Bedford County including career opportunities. 9th graders are invited to apply during the spring semester. Corporate sponsorships are vital in providing this opportunity to the 24 students in each year's class.

In recent years, YLBC has been expanded to include a **Youth Leadership Summit**, a day-long program awarded to outstanding students from the area's high schools, allowing intensive leadership training and networking using an abbreviated YLBC curriculum. A **Youth Leadership Council** has also been formed, allowing YLBC graduates additional opportunities to explore their leadership aspirations.

Contact the Chamber for more information on applying for Leadership Bedford County or to support our future leaders through Youth Leadership Bedford County.

INVESTING IN OUR FUTURE...YOUTH LEADERSHIP BEDFORD COUNTY



Sponsors may once again underwrite one or more full sponsorships or share a sponsorship. 25 Students from all six Bedford County high schools (including Hope for Hyndman) will participate in the 10-month program. Another 50 students will be invited to the 2023 Youth Leadership Bedford County Summit. Every effort will be made to match your scholarship with a student from your school district, if requested, and students will be encouraged to make a personal connection with their sponsors. *Please indicate the number of students you wish to sponsor next to the full sponsorship opportunity or check for shared.*

Signature Sponsoring Partnership (Exclusive: \$5,000 or 2 businesses may share for \$3,000 ea.)

- Listed in all YLBC materials (marketing, recruitment, media, etc.) as presenting sponsor of the program (*i.e. Youth Leadership Bedford County, presented by: Your Company Here*)
- Opportunity to speak during the sponsors luncheon and student graduation (5 min.)
- Company Logo/Link prominently displayed on program page of Chamber website & YLBC Social Media.
- Company Logo prominently featured on cover of student binders, and cover of graduation program/class directory.
- Recognition as presenting sponsor of the YLBC Summit.
- Presenting sponsor plaque for display in your business.

Full Sponsorship of Student - \$500 (*Please indicate # of students you wish to sponsor*)

- Invitation to meet your student during the YLBC sessions throughout the year.
- Company or organization logo included as a sponsor in YLBC Directory & Graduation program.
- Recognition included in the YLBC graduation page in the *Bedford Gazette*.
- Recognition (logo/link) included on the YLBC page of the Chamber website & all program marketing.
- Recognition as featured sponsor of the YLBC Summit.
- Invitation to graduation and sponsor recognition luncheon with the students & presentation of display plaque.

Shared Sponsorship - \$250 (As student co-sponsor)

- Invitation to meet your student during the YLBC sessions throughout the year
- Company or organization name included YLBC Directory/Graduation program
- Recognition (listing) included on the YLBC page of the Chamber website.
- Recognition as supporting sponsor of the YLBC Summit.
- Invitation to graduation and sponsor recognition luncheon with the students & presentation of display plaque.

BUSINESS NAME _____ / CONTACT NAME _____

EMAIL _____ / PHONE _____

TOTAL INVESTMENT: \$ _____ Student Sponsorship Request Details (student, school district, etc.) _____

Sponsorship contributions are tax deductible. Checks should be made payable to the **Bedford County Chamber Foundation** (a 501-(c)(3) educational organization). *If you have questions or suggestions about the Youth Leadership Bedford County program, please contact Kellie Goodman Shaffer or Sarah Ferrari at the Bedford County Chamber of Commerce at 814-623-2233. Completed sponsorship forms should be mailed to the Chamber Foundation at 203 South Juliana Street, Bedford, PA 15522; or Faxed to (814) 623-6089; or E-mailed to Kellie@BedfordCountyChamber.org*

